

# Element

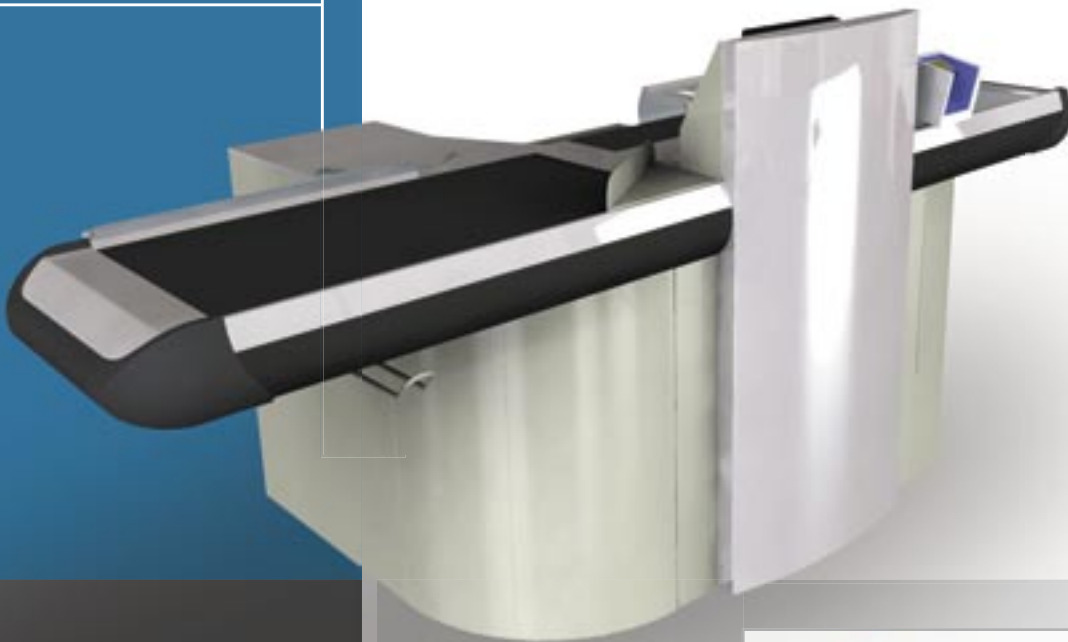


The Element checkout is a checkout designed according to a modular concept. De Element has been developed in line with the latest European directives and is made from durable materials, such as stainless steel.

The Element is based on three modules: the front and back modules and the (independent) hardware module. This makes many combinations possible in relation to the front and/or back module, whether your choice is

for a long or short conveyor belt, a large or small received-goods area, or a rear or front entry point.

The modular design gives you the freedom to make changes, such as with the type of scanner or the checkout layout. For example, an island checkout layout can be converted into a layout with single checkouts and vice versa. The Element means optimum flexibility both now and in the future!



Pan-Oston B.V.

For more than 30 years, Pan-Oston has produced and developed customised and standard front-end solutions for retail companies. Our client portfolio is very diverse. National and international retail companies, from large to small, in the supermarket, garden, DIY, cash and carry, and home furnishings sector all use our front-end solutions.



You can also add a touch of colour to the plinth unit below the conveyor belt and on the hardware module's panel. This means that the Element will always suit your shop perfectly.



**Pan-Oston**  
*Your store, our passion!*

[www.panoston.nl](http://www.panoston.nl)

P.O. Box 222  
8100 AE Raalte  
The Netherlands

[info@panoston.nl](mailto:info@panoston.nl)

Praamstraat 15  
8102 HM Raalte  
The Netherlands

T. +31 (0) 572 - 35 77 55  
F. +31 (0) 572 - 35 68 31